

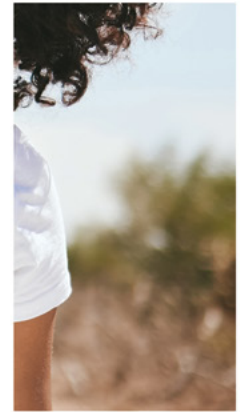


Bonitas

Medical Aid for South Africa



HOSPITAL



2026



**BONESSENTIAL
BONESSENTIAL SELECT**








WHAT YOU PAY

BONESSENTIAL

 MAIN MEMBER	R2 747
 ADULT DEPENDANT	R2 030
 CHILD DEPENDANT	R888

BONESSENTIAL SELECT

 MAIN MEMBER	R2 345
 ADULT DEPENDANT	R1 718
 CHILD DEPENDANT	R774



BONESSENTIAL USES A LIST OF **SPECIFIC PRIVATE HOSPITALS** AND LINKED FORMULARY OF CHRONIC MEDICATION.

BONESSENTIAL SELECT USES A LIST OF **SPECIFIC PRIVATE HOSPITALS** AND LINKED FORMULARY OF CHRONIC MEDICATION.

YOU ONLY PAY FOR A MAXIMUM OF THREE CHILDREN. DEPENDANTS UP TO AGE 24 YEARS PAY CHILD RATES.

IN-HOSPITAL BENEFITS

This benefit offers cover for major medical events that result in a beneficiary being admitted to hospital. Members have access to cover at a private hospital. Pre-authorisation is required. A co-payment may apply to specific admissions and/or procedures. Managed Care protocols apply.

Please note: On these options you can avoid a 30% co-payment by using a hospital on the applicable network.

SPECIALIST CONSULTATIONS/TREATMENT
GP CONSULTATIONS/TREATMENT
BLOOD TESTS AND OTHER LABORATORY TESTS
X-RAYS AND ULTRASOUNDS
MRI'S AND CT SCANS (SPECIALISED RADIOLOGY)
CATARACT SURGERY
ALLIED MEDICAL PROFESSIONALS (SUCH AS DIETICIAN, SPEECH AND OCCUPATIONAL THERAPIST)
PHYSIOTHERAPY AND BIOKINETICS
INTERNAL AND EXTERNAL PROSTHESES
HOSPITALISATION FOR DENTISTRY (GENERAL ANAESTHETIC)
MENTAL HEALTH HOSPITALISATION (ALSO SEE CARE PROGRAMMES PAGE 10)
TAKE-HOME MEDICINE

BONESSENTIAL	
Unlimited, network specialists covered in full at the Bonitas Rate	Unlimited, non-network specialists paid at 100% of the Bonitas Rate
Unlimited, covered at 100% of the Bonitas Rate	
Unlimited, covered at 100% of the Bonitas Rate	
Unlimited, covered at 100% of the Bonitas Rate	
R15 960 per family	Pre-authorisation required
R2 800 co-payment per scan event except for PMB	
Avoid a R9 800 co-payment by using the DSP	
PMB only	Subject to referral by treating practitioner
PMB only	Subject to referral by treating practitioner
PMB only	Managed Care protocols apply
Pre-authorisation required	Managed Care protocols apply
A co-payment of R5 200 per admission applies for the removal of impacted teeth only OR A R2 600 co-payment if the dental treatment is done in a day hospital	General anaesthetic benefit is available for the removal of impacted teeth Avoid a 30% co-payment by using a hospital on the applicable network
R19 060 per family	No cover for physiotherapy for mental health admissions
Avoid a 30% co-payment by using a hospital on the applicable network	
Limited to a 7-day supply up to R470 per hospital stay	

BONESSENTIAL SELECT	
Unlimited, network specialists covered in full at the Bonitas Rate	Unlimited, non-network specialists paid at 100% of the Bonitas Rate
Unlimited, covered at 100% of the Bonitas Rate	
Unlimited, covered at 100% of the Bonitas Rate	
Unlimited, covered at 100% of the Bonitas Rate	
R15 960 per family	Pre-authorisation required
R2 800 co-payment per scan event except for PMB	
Avoid a R9 800 co-payment by using the DSP	
PMB only	Subject to referral by treating practitioner
PMB only	Subject to referral by treating practitioner
PMB only	Managed Care protocols apply
Pre-authorisation required	Managed Care protocols apply
A co-payment of R5 200 per admission applies for the removal of impacted teeth only OR A R2 600 co-payment if the dental treatment is done in a day hospital	General anaesthetic benefit is available for the removal of impacted teeth Avoid a 30% co-payment by using a hospital on the applicable network
R19 060 per family	No cover for physiotherapy for mental health admissions
Avoid a 30% co-payment by using a hospital on the applicable network	
Limited to a 7-day supply up to R470 per hospital stay	

All benefits and limits are per calendar year, unless otherwise stated. Managed Care protocols apply. All benefits are subject to approval by the Council for Medical Schemes. **PMB** = Prescribed Minimum Benefits **DSP** = Designated Service Provider

PHYSICAL REHABILITATION
ALTERNATIVES TO HOSPITAL (HOSPICE, STEP-DOWN FACILITIES)
PALLIATIVE CARE (CANCER ONLY)
CANCER TREATMENT (SUBJECT TO REGISTRATION ON THE ONCOLOGY MANAGEMENT PROGRAMME – SEE PAGE 10)
PET SCANS (SUBJECT TO REGISTRATION ON THE ONCOLOGY MANAGEMENT PROGRAMME)
CANCER MEDICINE
ORGAN TRANSPLANTS
KIDNEY DIALYSIS
HIV/AIDS (ALSO SEE CARE PROGRAMMES PAGE 11)
DAY SURGERY PROCEDURES (APPLIES TO SELECTED PROCEDURES)

BONESSENTIAL	
R63 340 per family	
R20 310 per family	Managed Care protocols apply
Unlimited, subject to using the DSP	Including hospice/private nursing, home oxygen, pain management, psychologist and social worker support
Unlimited for PMBs at a DSP	Pre-authorisation required
Avoid a 30% co-payment by using a DSP	Sublimit of R63 110 per beneficiary for Brachytherapy
PMB only	Avoid a 25% co-payment by using a provider on the network
Subject to Medicine Price List and preferred product list	Avoid a 20% co-payment by using a DSP
PMB only	
Unlimited	Avoid a 20% co-payment by using a DSP
Unlimited, if you register on the HIV/AIDS programme	Chronic medicine must be obtained from the DSP
Avoid a R6 500 co-payment by using a network day hospital	

BONESSENTIAL SELECT	
R63 340 per family	
R20 310 per family	Managed Care protocols apply
Unlimited, subject to using the DSP	Including hospice/private nursing, home oxygen, pain management, psychologist and social worker support
Unlimited for PMBs at a DSP	Pre-authorisation required
Avoid a 30% co-payment by using a DSP	Sublimit of R63 110 per beneficiary for Brachytherapy
PMB only	Avoid a 25% co-payment by using a provider on the network
Subject to Medicine Price List and preferred product list	Avoid a 20% co-payment by using a DSP
PMB only	
Unlimited	Avoid a 20% co-payment by using a DSP
Unlimited, if you register on the HIV/AIDS programme	Chronic medicine must be obtained from the DSP
Avoid a R7 100 co-payment by using a network day hospital	

PROCEDURE CO-PAYMENTS (PER EVENT, SUBJECT TO PRE-AUTHORISATION)

R2 020 co-payment	R5 130 co-payment	R9 500 co-payment
<ol style="list-style-type: none"> 1. Colonoscopy 2. Conservative Back Treatment 3. Cystoscopy 4. Facet Joint Injections 5. Flexible Sigmoidoscopy 6. Functional Nasal Surgery 7. Gastrosocopy 8. Hysteroscopy (not Endometrial Ablation) 9. Myringotomy 10. Tonsillectomy and Adenoidectomy 11. Umbilical Hernia Repair 12. Varicose Vein Surgery 	<ol style="list-style-type: none"> 1. Arthroscopy 2. Diagnostic Laparoscopy 3. Laparoscopic Hysterectomy 4. Percutaneous Radiofrequency Ablations (Percutaneous Rhizotomies) 	<ol style="list-style-type: none"> 1. Laparoscopic Pyeloplasty 2. Laparoscopic Radical Prostatectomy 3. Nissen Fundoplication (Reflux Surgery)

All benefits and limits are per calendar year, unless otherwise stated. Managed Care protocols apply. All benefits are subject to approval by the Council for Medical Schemes. **PMB** = Prescribed Minimum Benefits **DSP** = Designated Service Provider

CHRONIC BENEFITS

BonEssential and BonEssential Select cover you for the 28 chronic conditions listed below on the applicable formulary. You must use Pharmacy Direct, our Designated Service Provider, to get your medicine. If you choose not to use Pharmacy Direct or if you choose to use medicine that is not on the formulary, you will have to pay a 30% co-payment. Pre-authorisation is required.

BONESSENTIAL & BONESSENTIAL SELECT

PRESCRIBED MINIMUM BENEFITS COVERED

1.	Addison's Disease
2.	Asthma
3.	Bipolar Mood Disorder
4.	Bronchiectasis
5.	Cardiac Failure
6.	Cardiomyopathy
7.	Chronic Obstructive Pulmonary Disease
8.	Chronic Renal Disease
9.	Coronary Artery Disease

10.	Crohn's Disease
11.	Diabetes Insipidus
12.	Diabetes Type 1
13.	Diabetes Type 2
14.	Dysrhythmias
15.	Epilepsy
16.	Glaucoma
17.	Haemophilia
18.	HIV/AIDS

19.	Hyperlipidaemia
20.	Hypertension
21.	Hypothyroidism
22.	Multiple Sclerosis
23.	Parkinson's Disease
24.	Rheumatoid Arthritis
25.	Schizophrenia
26.	Systemic Lupus Erythematosus
27.	Ulcerative Colitis

ADDITIONAL CONDITION COVERED

28.	Depression (medication up to R165 per beneficiary, per month)
-----	---

All benefits and limits are per calendar year, unless otherwise stated. Managed Care protocols apply. All benefits are subject to approval by the Council for Medical Schemes. **PMB** = Prescribed Minimum Benefits **DSP** = Designated Service Provider

OUT-OF-HOSPITAL BENEFITS

These benefits provide cover for emergency room consultations and other out-of-hospital medical expenses. **Please note:** When you complete an online mental health assessment and a wellness screening, you unlock the Benefit Booster which can be used to pay for out-of-hospital expenses first. See page 7 for more information.

BONESSENTIAL & BONESSENTIAL SELECT

EMERGENCY ROOM BENEFIT (FOR EMERGENCIES ONLY)	2 emergency consultations per family at a casualty ward or emergency room facility of a hospital	Benefit limited to emergencies only
	If it is not classified as an emergency, it will be paid from the available Benefit Booster amount	
IN-ROOM PROCEDURES	Cover for a defined list of approved procedures performed in the specialist's rooms	Pre-authorisation required
MRIs AND CT SCANS (SPECIALISED RADIOLOGY)	PMB only	

ADDITIONAL BENEFITS

BONESSENTIAL & BONESSENTIAL SELECT

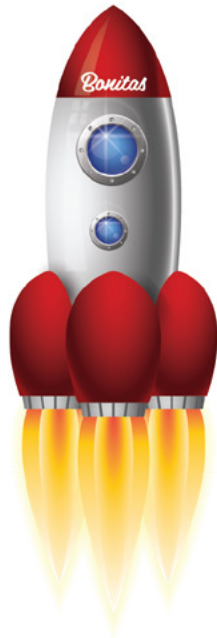
INTERNATIONAL TRAVEL BENEFIT	Up to R1.2 million cover per family for medical emergencies when you travel outside South Africa	You must register for this benefit prior to departure
AFRICA BENEFIT	In and out-of-hospital treatment covered at 100% of the Bonitas Rate	Subject to authorisation

All benefits and limits are per calendar year, unless otherwise stated. Managed Care protocols apply. All benefits are subject to approval by the Council for Medical Schemes. **PMB** = Prescribed Minimum Benefits **DSP** = Designated Service Provider

BENEFIT BOOSTER

GET UP TO
R1 160
IN EXTRA BENEFITS

TO PAY FOR
OUT-OF-HOSPITAL
CLAIMS



WHAT IS THE BENEFIT BOOSTER?

It's an extra out-of-hospital benefit amount in addition to your day-to-day or savings amount, that you get after completing an online mental health assessment and a wellness screening. Once activated, out-of-hospital claims like GP visits, over-the-counter medicine, X-rays and blood tests will then first pay from the available Benefit Booster amount – helping your day-to-day benefit/savings last longer.

Annual amount available per family

IF YOU ARE ON

**BonEssential &
BonEssential
Select**

YOUR BENEFIT
BOOSTER AMOUNT

R1 160

HOW TO ACTIVATE IT

Complete an online mental health assessment *and* a wellness screening (at a Bonitas wellness day or participating pharmacy).

WE ADVISE YOU TO MAKE USE OF NETWORK PROVIDERS AND MEDICINE ON THE BONITAS FORMULARY TO AVOID CO-PAYMENTS

Ts & Cs apply. Child dependants under the age of 21 years can access the Benefit Booster once an adult beneficiary has completed the online mental health assessment and a wellness screening at a Bonitas wellness day or participating pharmacy. All claims are paid at the Bonitas Rate.

NEW

MOTHER & CHILD CARE



MATERNITY CARE

- 6 antenatal consultations with a gynaecologist, GP or midwife
- 2 2D ultrasound scans
- 1 amniocentesis
- 4 consultations with a midwife after delivery (1 of these can be used for a consultation with an accredited lactation specialist)
- R200 per month for antenatal vitamins during pregnancy (Paid from available Benefit Booster, subject to formulary)



CHILDCARE

- Hearing screening for newborns up to 8 weeks, in or out-of-hospital
- Congenital hypothyroidism screening for infants under 1 month old
- Babyline: 24/7 helpline for medical advice for children under 3 years
- 1 GP consultation per child between ages 2 and 12
- Milestone reminders for children under 3 years
- Online screenings for infant and toddler health
- 2 vision screening tests by an ophthalmologist for premature newborns up to 6 weeks, in or out-of-hospital



MATERNITY PROGRAMME

REGISTER FOR THE MATERNITY PROGRAMME AND GET:

- Access to 24/7 maternity advice line
- Dedicated maternity nurse/midwife to support and advise you throughout your pregnancy
- Access to articles regarding common pregnancy concerns
- Pregnancy education emails and SMSs sent to you weekly
- Online antenatal classes to prepare you for the birth and what to expect when you get home
- Baby bag including baby care essentials
- Early identification of high-risk pregnancies
- Weekly engagement for high-risk pregnancies
- Post-childbirth follow-up calls
- Online assessments for pregnancy and mental health

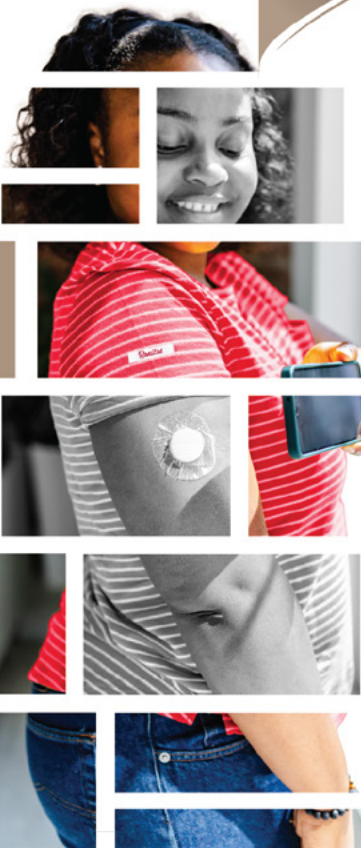


BE BETTER BENEFIT



PREVENTATIVE CARE

- 1 HIV test and counselling per beneficiary
- 1 flu vaccine per beneficiary
- 1 mammogram every 2 years, for women over 40
- 1 pap smear every 3 years, or 1 HPV PCR test every 5 years, for women between ages 21 and 65
- 1 prostate screening antigen test for men between ages 55 and 69
- 1 pneumococcal vaccine every 5 years, for members aged 65 and over
- 1 stool test for colon cancer, for members between ages 45 and 75
- Dental fissure sealants: 1 per tooth, once every 3 years for beneficiaries under 16 years
- 2 doses of the human papillomavirus (HPV) vaccine for female beneficiaries between ages 9 and 14 (limited to 1 course per lifetime)
- 3 doses of the human papillomavirus (HPV) vaccine for female beneficiaries between ages 15 and 26 (limited to 1 course per lifetime)
- Free online hearing screening for beneficiaries aged 18 and over on the Bonitas website



WELLNESS BENEFIT

- 1 wellness screening per beneficiary, aged 21 and over, at a participating pharmacy or a Bonitas wellness day

Wellness screening includes the following tests:

- Blood pressure
- Cholesterol
- Glucose
- Body Mass Index
- Waist-to-hip ratio

Remember to complete your online mental health assessment too, to unlock your Benefit Booster



CONTRACEPTIVES

- R1 580 per family (for women aged up to 50)
- You must use Pharmacy Direct, our Designated Service Provider for pharmacy-dispensed contraceptives
- If you choose not to use the Designated Service Provider, a 40% co-payment applies
- **Injectable contraceptives and administration covered at any Bonitas Network Pharmacy**



CARE PROGRAMMES

MENTAL HEALTH



- Available to members who suffer from depression, anxiety, post-traumatic stress disorder and alcohol abuse, limited to R14 400 per beneficiary
- Access to a Counsellor who will work with you, your treating doctor and where appropriate, with other healthcare professionals to assist in improving your condition
- Your Counsellor will help you understand the importance of preventative care and the use of wellness benefits as well as resolve queries related to any other health condition
- Provides educational material on mental health which empowers you to manage your condition
- A digital platform designed to give members easy access to mental health information, community support and expert help
- Primary care support through a GP and assistance to facilitate enrolment on the programme

CANCER



- Puts you first, offering emotional and medical support
- Liaises with your doctor to ensure your treatment plan is clinically appropriate to meet your needs
- Access to a social worker for you and your loved ones
- Uses the Bonitas Oncology Medicine Network (20% co-payment applies for use of a non-network provider)
- Matches the treatment plan to your benefits to ensure you have the cover you need
- Uses the Bonitas Oncology Network of specialists

DIABETES MANAGEMENT



- Empowers you to make the right decisions to stay healthy
- Provides cover for the tests required for the management of diabetes as well as other chronic conditions
- Offers access to diabetes doctors, dieticians and podiatrists
- Gives access to a dedicated Care Manager to answer any questions you may have
- Offers a personalised care plan for your specific needs
- Provides education to help you understand your condition better
- Includes two consultations with a Diabetes Nurse Educator to provide specialised diabetes care

BACK AND NECK



- Assessment of back and neck pain to determine the level of care required before surgery to give you the best outcome
- Offers a personalised treatment plan for up to 6 weeks
- Includes treatment from doctors, back and neck physiotherapists and/or biokineticists
- Gives access to a home care plan to maintain long-term results and helps manage severe back and neck pain
- Highly effective and low-risk, with an excellent success rate
- We cover the cost of the programme, excluding X-rays
- Uses the DBC network
- **Programme will cover shoulder and knee pain as well**

NEW

CARE PROGRAMMES



HOSPITAL-AT-HOME



- Care for any acute medical condition deemed appropriate by your treating doctor in collaboration with the hospital-at-home care team i.e., pneumonia, Covid-19, cellulitis, acute heart failure
- An alternative to general ward admission, allowing you to receive quality, safe healthcare in the comfort of your home
- A possible alternative to a step-down facility (depending on your condition and treatment needs), allowing for multidisciplinary services from the doctors, nurses and allied health professionals, such as physiotherapists
- All the essential elements of hospital-level care: remote patient monitoring (including 24/7 vital sign monitoring from our clinical command centre), daily virtual visits and clinical support from our team of doctors and nurses, provision of medical equipment such as oxygen when needed, intravenous therapy, and emergency ambulance services, when needed
- The in-person clinical visits also provide support for blood tests and medication administration as prescribed
- A transitional care programme to minimise unplanned hospital re-admission
- Hospital-at-home is subject to pre-authorisation

FEMALE HEALTH



- Accessible to all female members aged 18 and above
- Guidance, support, and education led by women's healthcare experts
- Early detection of diseases and seamless access to specialised care
- Proactive support in accessing essential healthcare services
- Promotion of preventative healthcare strategies tailored to women's needs
- Online health assessments tailored to female health concerns
- Empowerment of women to actively manage their health



HIV/AIDS

- Provides you with appropriate treatment and tools to live your best life
- Offers HIV-related consultations to visit your doctor to monitor your clinical status
- Offers access to telephonic support from doctors
- Covers medicine to treat HIV (including drugs to prevent mother-to-child transmission and infection after sexual assault or needle-stick injury)
- Covers regular blood tests to monitor disease progression, response to therapy and to detect possible side-effects of treatment
- Offers 1 annual pap smear for HIV+ women between ages 21-65, registered on the programme
- Covers 1 basic cytology test per annum or the HPV PCR once every 5 years
- Gives ongoing patient support via a team of trained and experienced counsellors
- Treatment and prevention of opportunistic infections such as pneumonia, TB and flu
- Helps in finding a registered counsellor for face-to-face emotional support



MEMBERSHIP

MAKE THE MOST OF YOUR **BONITAS MEMBERSHIP** WITH THE MEMBER INFORMATION HUB ON OUR WEBSITE!

We know that medical aid can be confusing at times, but we've made it easy for you to quickly access essential medical aid information. And there is no need to log in, just info at the click of a button, like:

- How to get your claims paid quickly
- Effortlessly getting hospital authorisations
- Registering your chronic medicine
- Accessing our Maternity Programme
- Getting more benefits with the Benefit Booster
- Going for a free wellness screening
- And much more...

TO JOIN SPEAK TO YOUR **FINANCIAL ADVISOR**,
OR VISIT **BONITAS.CO.ZA**

 Bonitas WhatsApp 060 070 2491

 BonCap/BonCore WhatsApp 060 042 9254

 www.bonitas.co.za

 Bonitas Medical Fund

 bonitas.co.za/members

 Bonitas Member App (excl. BonCap & BonCore)

 @BonitasMedical